



LONG RAPIDS PROJECT

ITC Michigan through the Michigan Electric Transmission Company, LLC (METC) is upgrading electricity transmission infrastructure in Michigan.

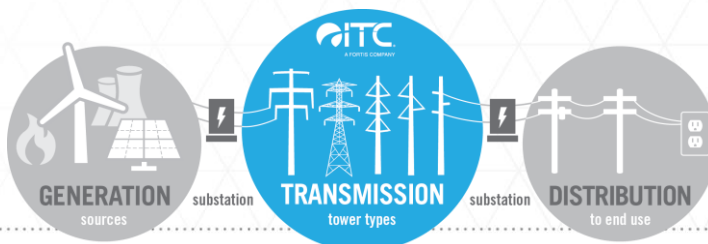
METC is building a new 138,000 volt (138 kV) substation called Long Rapids and is relocating its transmission infrastructure from the nearby Alpena substation to the new substation, including the Alpena – Airport, Alpena – Iosco and Alpena – Rockport 138 kV lines. Additionally, METC is rebuilding approximately 6.3 miles of the Airport – Alpena (Long Rapids) line, replacing the existing single-circuit structures with new double-circuit structures and installing optical ground wire (OPGW). It is also constructing 2.4 miles of new line on the Mio-Airport 138 kV single-circuit line. Construction began in Q2 2022 and is expected to be completed in Q4 2024.

The Long Rapids Project is an example of ITC’s ongoing commitment to the operational efficiency and reliability of Michigan’s high-voltage transmission grid. The company has invested \$7 billion in capital project maintenance and transmission infrastructure improvements in Michigan since 2003. These investments are improving the reliability and safety of the transmission infrastructure while ensuring its ability to meet new energy demands.

ITC Holdings Corp., through subsidiaries ITC *Transmission* and Michigan Electric Transmission Company, LLC (METC), owns and maintains more than 9,100 circuit miles of high-voltage electric lines and 392 transmission stations and substations throughout Michigan’s Lower Peninsula. As the nation’s largest independent electric transmission company, ITC focuses solely on electric transmission to enhance reliability, relieve electric transmission congestion and connect all energy resources, including renewables, to customers in a non-discriminatory manner. ITC has been making significant investments in Michigan’s transmission grid to improve reliability, safety and efficiency and lower the overall cost of delivered energy.



The new Long Rapids transmission line towers will be similar to the ones shown here. On the left is a double-circuit tower, and on the right is a single-circuit tower.



NOVEMBER 2024