



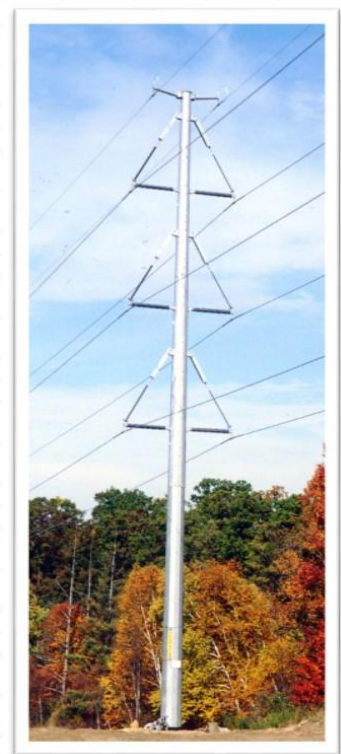
BARD ROAD - WARREN REBUILD PROJECT

ITC Michigan, through its Michigan Electric Transmission Company, LLC (METC), is upgrading electricity transmission infrastructure in Gladwin and Midland Counties. METC rebuilt approximately 20 miles of its Bard Road – Warren 138,000 volt (138 kV) transmission line, replacing the existing structures with new, double-circuit monopoles designed for higher-rated conductor (wire).

Pre-construction vegetation work began in the transmission line corridor in Q1 2021 to ensure there was no hazardous vegetation that would interfere with the safe and reliable operation of the line. Line construction began in Q4 2021 and was completed in Q2 2022.

The Bard Road – Warren Rebuild Project is an example of ITC’s ongoing commitment to the operational efficiency and reliability of Michigan’s high-voltage transmission grid. The company has invested \$7 billion in capital project maintenance and transmission infrastructure improvements in Michigan since 2003. These investments are improving the reliability and safety of the transmission infrastructure while ensuring its ability to meet new energy demands.

ITC Holdings Corp., through ITC *Transmission* and Michigan Electric Transmission Company, LLC (METC), owns and maintains more than 9,100 circuit miles of high-voltage electric lines and 392 transmission stations and substations throughout Michigan’s Lower Peninsula. As the nation’s largest independent electric transmission company, ITC focuses solely on electric transmission to enhance reliability, relieve electric transmission congestion and connect all energy resources, including renewables, to customers in a non-discriminatory manner. ITC has been making significant investments in Michigan’s transmission grid to improve reliability, safety and efficiency and lower the overall cost of delivered energy.



The new Bard Road – Warren double-circuit monopoles will be similar to the one shown here.

NOVEMBER 2024

