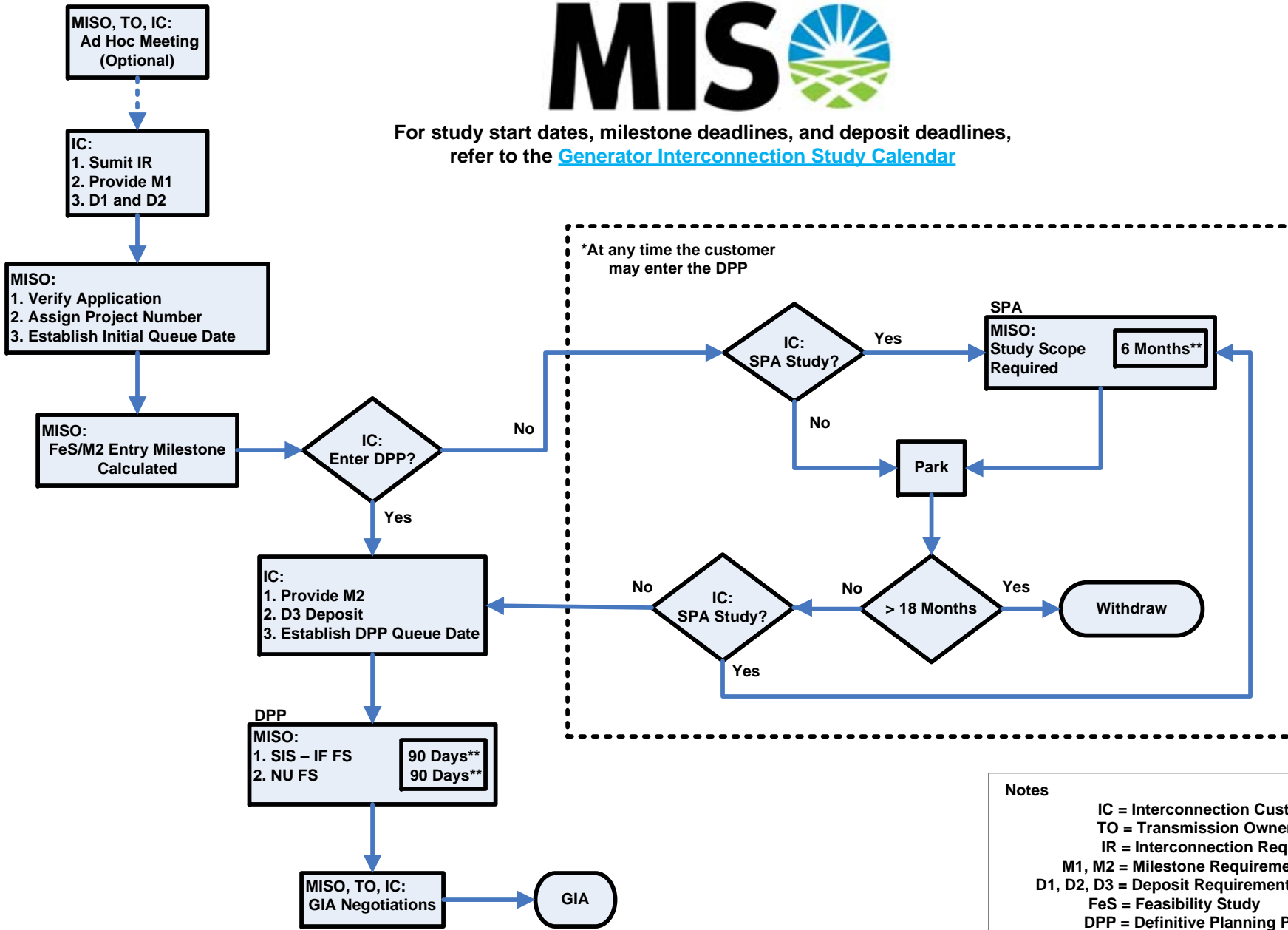




For study start dates, milestone deadlines, and deposit deadlines, refer to the [Generator Interconnection Study Calendar](#)



*At any time the customer may enter the DPP

- Notes**
- IC = Interconnection Customer
 - TO = Transmission Owner
 - IR = Interconnection Request
 - M1, M2 = Milestone Requirements
 - D1, D2, D3 = Deposit Requirements
 - FeS = Feasibility Study
 - DPP = Definitive Planning Phase
 - SPA = System Planning and Analysis
 - GIA = Generator Interconnection Agreement
 - SIS = System Impact Study
 - NU = Network Upgrade
 - IF = Interconnection Facilities
 - FS = Facilities Study
 - ** = Estimated
 - ← - - - = Optional

Milestones:

M1:

Non – Technical Requirements

- Complete Application (Appendix 1 with Attachments A, B and C)
- Proof of Site Control or \$100,000 deposit in-lieu of site control (dedicated refundable deposit)
 - Project site map indicating lease/ownership interest boundaries
 - Copies of each agreement or copies of the agreements signature pages with a complete sample agreement
 - Document signed by a company executive that states all the listed agreements are on file in their entirety, all referenced land is within the proposed project boundaries, and those agreements constitute 50% or greater ownership of the project’s total site.
 - A consultant will review new projects at random and determine if land requirements have been met.

Technical Requirements

- Point of Interconnection (POI)
- Generic Stability Model (for all versions of PSS/e)
 - Wind: A model of the turbines to be used in the project must be provided on a compact disk. If the model is not available, a letter attesting to the type of turbine technology and reactive power capability at the Point of Interconnection must be provided.
 - All Other Generators: Completed Attachment A data/specifications for the project’s Generator with non-applicable sections marked accordingly.
- Impedance from collective substation to POI
- Technical data to run studies
- One-line diagram
- Gross and net generation output (MW)
- Step-up Transformer data (POI transmission step up transformer)

System Planning and Analysis (SPA)

Study Requirements

- Provide the SPA Study Scope - Appendix 2 Attachment A

M2:

Non – Technical Requirements

- Definitive Planning Entry Milestone
 - Cash or irrevocable letter of credit
- Proof of Site Control
 - M1 site control deposit becomes non-refundable within 10 days into the DPP cycle and will be applied towards future construction costs
 - M1 site control documentation may be provided and deposit will be refunded

Technical Requirements

- Definitive Point of Interconnection *
- Definitive one line diagram (information including breaker setup, distances to POI on existing lines, and line characteristics) *
- Definitive gross and net generator output (MW) *
- Detailed Stability Model *
 - Wind – PSS/E version 29, 30, 31, or 32
 - Other generator types – All information requested in Attachment A of Appendix 1

*Any material changes (see tariff definition) after this point will result in withdrawal of the project

Note:

For detailed information regarding milestones, please see Attachment X of the MISO Tariff and the Generator Interconnection Business Practices Manual.

Ref	Description	Refund	<6 MW	≥6 but ≤ 20 MW	> 20 but ≤ 50 MW	> 50 but ≤ 100 MW	> 100 but ≤ 200 MW	> 200 but ≤ 500 MW	> 500 but < 1000 MW	≥ 1000 MW
D1	Application Fee/Fund FeS	No	\$5,000	\$5,000	\$5,000	\$5,000	\$5,000	\$5,000	\$5,000	\$5,000
D2	Fund System Impact Study (SIS)	Yes	\$10,000	\$20,000	\$30,000	\$60,000	\$60,000	\$60,000	\$90,000	\$120,000
D3	Fund DPP and Restudies	Partial	\$40,000	\$100,000	\$150,000	\$210,000	\$260,000	\$360,000	\$440,000	\$520,000