



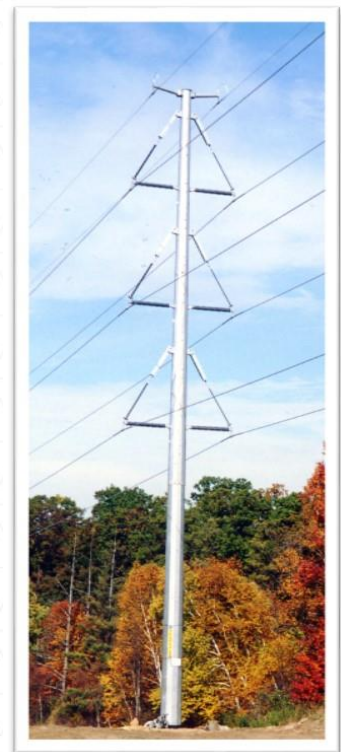
# BROOKS INDUSTRIAL INTERCONNECTION PROJECT

To support economic growth in south central Michigan, ITC Michigan, through its Michigan Electric Transmission Company (METC) subsidiary, is constructing a new substation, called Brooks Industrial, and 3.5 miles of new transmission lines in the City of Marshall, and in Marshall and Fredonia Townships. The project will connect to the existing Verona – Marshall 138,000 volt (138 kV) transmission line. Construction will begin in Q2 2022 and is expected to be completed by the end of that year.

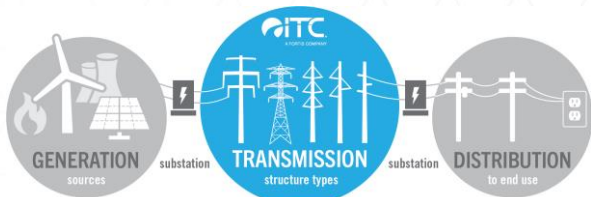
ITC’s approach to transmission infrastructure development takes into consideration the unique nature of every project. Projects are assessed individually for safety, reliability, cost-effectiveness, environmental impacts and community impacts to determine the best transmission solution for each project.

The Brooks Industrial Interconnection Project is an example of ITC’s ongoing commitment to the operational efficiency and reliability of Michigan’s high-voltage transmission grid. The company has invested \$5 billion in capital project maintenance and transmission infrastructure improvements in Michigan since 2003. These investments are improving the reliability and safety of the transmission infrastructure while ensuring its ability to meet new energy demands.

ITC Holdings Corp., through subsidiaries ITC *Transmission* and Michigan Electric Transmission Company, LLC (METC), owns and maintains more than 8,700 circuit miles of high-voltage electric lines and 283 transmission stations and substations throughout Michigan’s Lower Peninsula. As the nation’s largest independent electric transmission company, ITC focuses solely on electric transmission to enhance reliability, relieve electric transmission congestion and connect all energy resources, including renewables, to customers in a non-discriminatory manner. ITC has been making significant investments in Michigan’s transmission grid to improve reliability, safety and efficiency and lower the overall cost of delivered energy.



The new Brooks Industrial structures will be similar to the one shown above.



MAY 2020